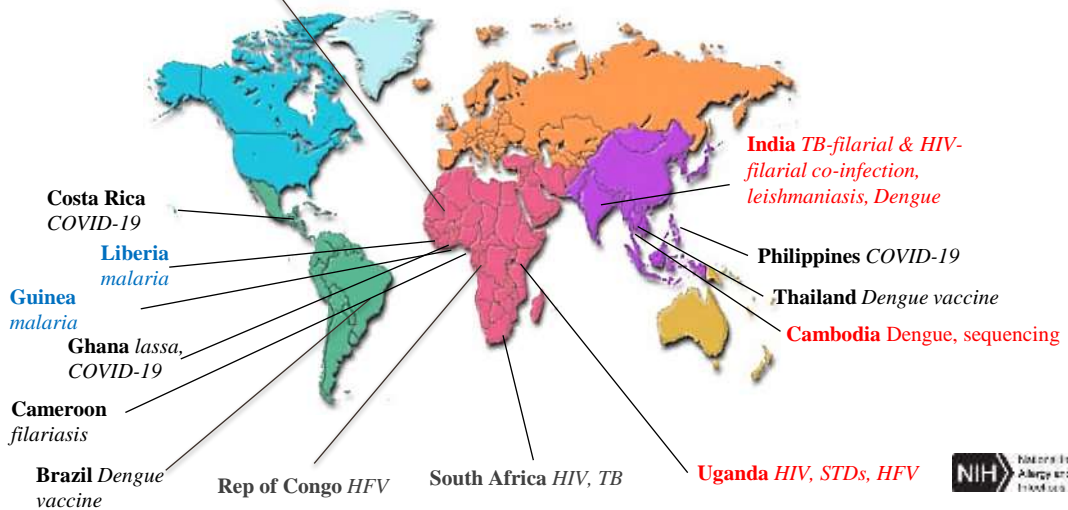


DIR International Sites

Mali *malaria, filariasis, leishmaniasis, HFV, CoVID-19*



International Centers for Excellence in Research (ICERs)

Established in 2001 to address infectious diseases in the developing world

Focus areas:

- HIV, TB, malaria, vector-borne and respiratory diseases

Local partners:

- Academic centers, Government institutions, International entities (universities, government, NGOs)

Emphasis:

- Basic laboratory and field research
- Translational research
- Infrastructure development (including IT)
- Training

Mali ICER

University of Sciences, Techniques, and Technologies of Bamako (USTTB)



Initiated 1989

Malaria (LMIV, LMVR, LIG)

- Vaccine development, Genetics, Cell biology, Immunology, mAb for malaria prevention

Vector Biology (LMVR)

- Insects traveling in wind streams

Filariasis (LPD)

- Drug studies

Lassa Fever, Congo-Crimean Hemorrhagic Fever (LV)

COVID-19 Studies (LMIV)

Jordyn Gamiel, Ydrissa Sow, Fatoumata Bathily



Uganda ICER



Infectious Diseases Institute & Makerere College of Health Sciences - Kampala

Uganda Virus Research Institute - Entebbe

Rakai Health Sciences Program - Kalisizo

- HIV surveillance, studies
- Renovated BSL-2/BSL-3 lab opened Oct '22
- Emerging pathogen screening
- Livestock and rodent sampling



PIs - Steve Reynolds, Tom Quinn, Heinz Feldmann, David Hawman



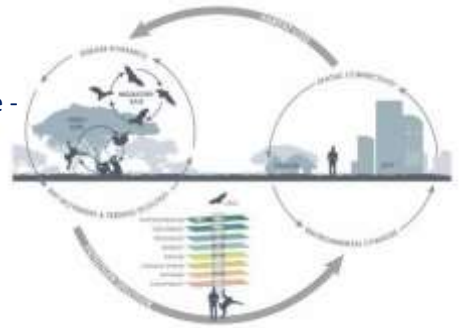
Republic of the Congo



Laboratoire National de Sante Publique - Brazzaville
Wildlife Conservation Society

Focus:

- Hemorrhagic fever viruses
- Catch and sample bats and rodents
- Characterize pathogens in-country, develop models and countermeasures (at RML)

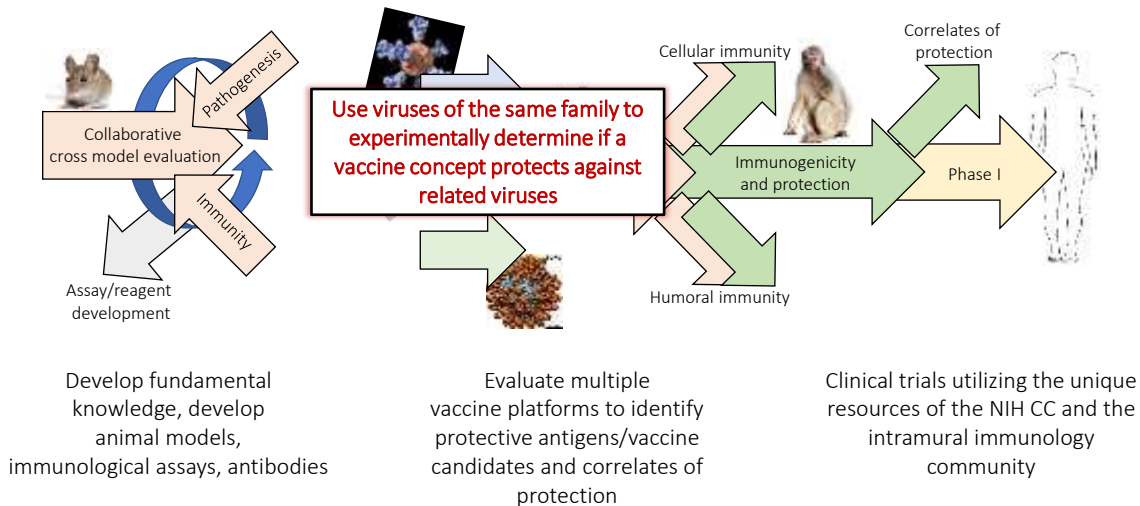


PI - Vincent Munster

Plowright et al, 2017



DIR viral pandemic preparedness pipeline



Generative AI

- Innovative pathways to scientific discoveries?
- Accelerate vaccine development, drug repurposing analysis, epidemiology studies, early detection of outbreaks
- New staffing
- Controls and policies

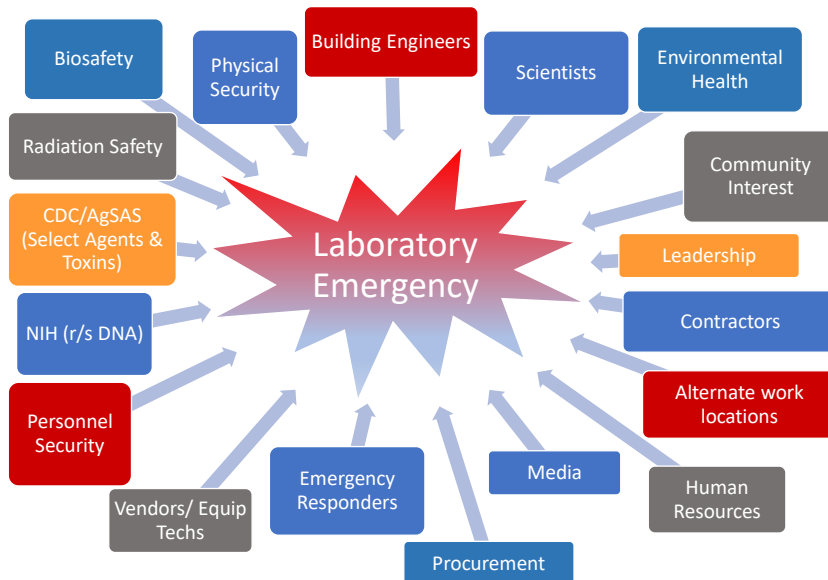
MT tell me a joke about NIAID

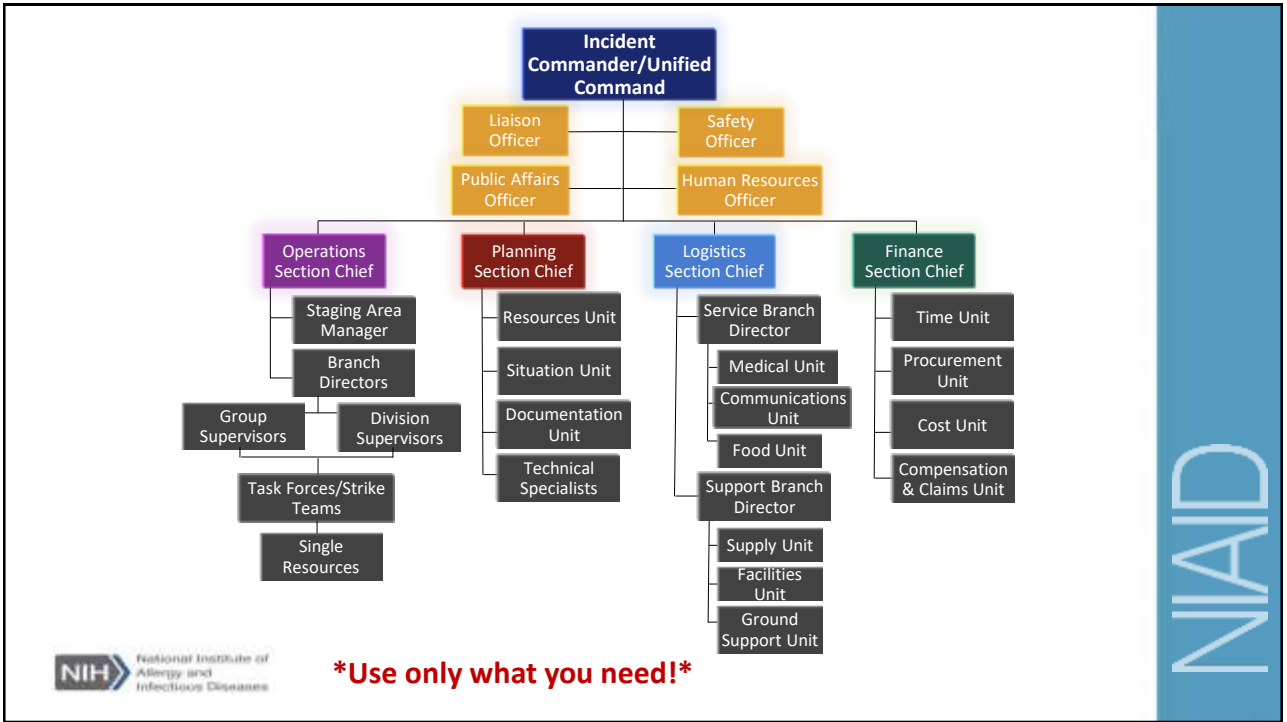
Why did the NIAID researcher become a comedian?

Because they wanted to study how laughter spreads faster than viruses, and it was a great way to practice social distancing in the lab!



Mission success requires unified team efforts





THE COMPOSITION OF

TRUST

CHARACTER		COMPETENCE	
INTENT	INTEGRITY	CAPABILITY	RESULTS
CARING	HONESTY	SKILLS	REPUTATION
TRANSPARENCY	FAIRNESS	KNOWLEDGE	CREDIBILITY
OPENNESS	AUTHENTICITY	EXPERIENCE	PERFORMANCE

REPRODUCED BY THE PORTER AUTHORITY

Trust,
but
verify.

- Ronald Reagan

Conclusions

- Operational excellence
- Build strong professional relationships
- Shared mission
- Team efforts = mutual success
- Challenge assumptions and ask better questions
- Speed of relevancy
- Build toward the future
- Mental fitness and wellbeing
- Celebrate all successes



Acknowledgements

NIAID DIR OD

Steve Holland
Karyl Barron (ret)
Meredith Shaffer
Joe Blaney
Beth Schmidt
Kerbie Benoit

DIR RML

Marshall Bloom
Josh Kellar

DIR ICER Team

Mark Pineda
Jordyn Gamiel

DIR Facilities Team

Benson Maloba
Howard Keys
Tom Potts
Kevin Lawrence
Sam Moretz

DIR Contracting Team

Liane Agulto
Desta Mills
Zhi "Zach" Zheng
Jennifer Mitchell
Julie Hartman

DIR Labs - LID, LVD, LV, LMIV, et al

NIAID OBRs

Mike Nealy
Brian Noble
Kaci Vandalen

ORS DOHS

Jessica McCormick-Ell
Jeff Potts
Carolyn Buckwalter
Kenneth Shenge
Aaron Buchanan
Althea Treacy
and more

ORF

Donna Phillips
Ivan Locke
Dan Glover
Dan Janniello
Earl Johnson
Kanika Sharma
Melinda Alexander
Jeanne Keegan
Jack Veldboom
Jim Parr
and more





Christopher Hanson
33 North Drive, Rm 2N09
Bethesda, MD 20892
chanson@niaid.nih.gov
301-761-6326

Thank You!

**Your services to public health
and safety initiatives are
vital and important**

Questions?

