

Enabling Scientific Discovery at NIAID

Christopher Hanson
Associate Director for
Scientific & Business
Operations
DIR, NIAID, NIH, HHS

ChABSA Annual Scientific
Symposium
June 7, 2023



Overview

- Career beginnings
 - Current role at NIAID
 - Science advocacy via program management
 - International research
 - Next gen science
 - Lessons learned/Conclusions
 - Questions?
-
- Disclaimer – Personal viewpoints, not necessarily NIAID, NIH or Federal Government policy or position statements



LID Dengue Vaccine Research

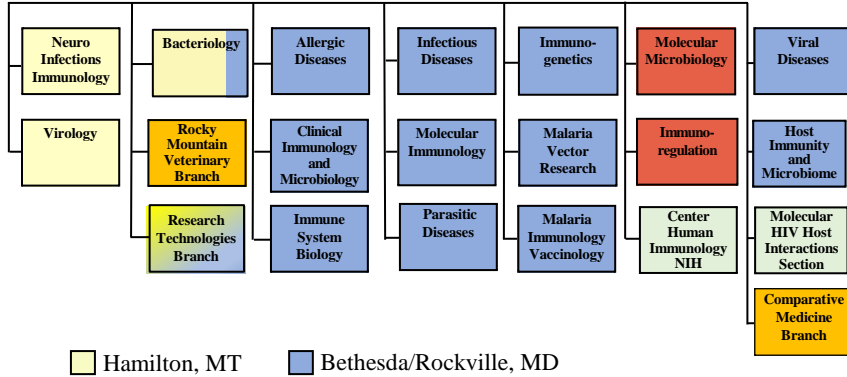
- Licensed to Butantan Institute of Brazil
- Phase 3 study initiated in 2016 included 16,000 volunteers and currently released results show 79.6% efficacy to prevent disease



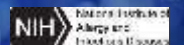
Division of Intramural Research



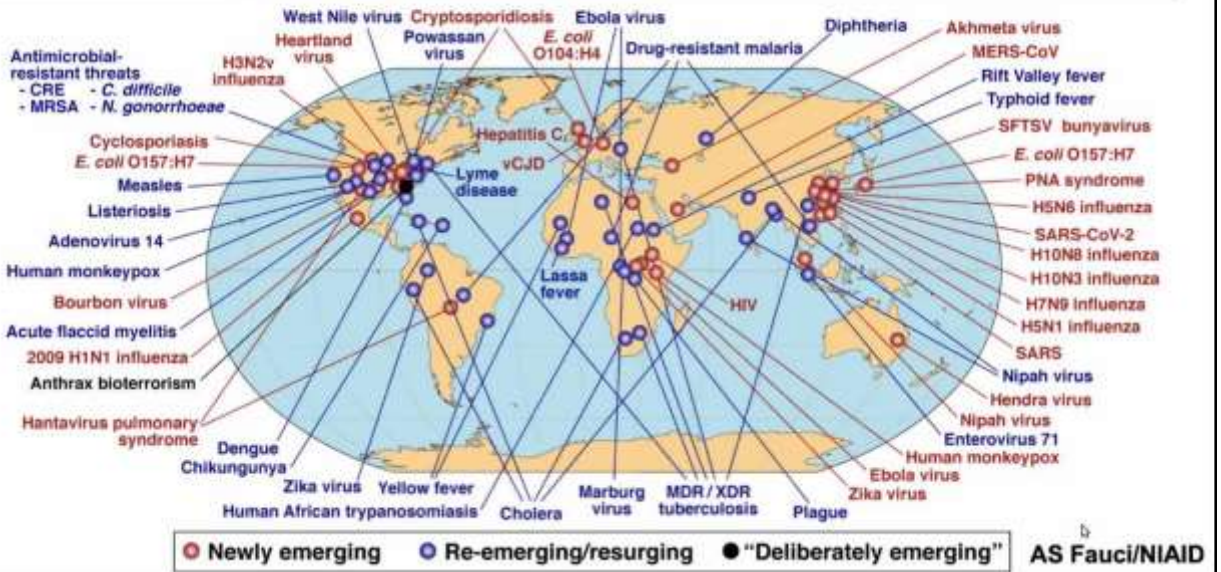
- 119 Principal Investigators
- 1900+ Badged staff, trainees, contractors, volunteers



My DIR Portfolio



Global Examples of Emerging and Re-Emerging Infectious Diseases



Expansion of Research Capacity for Emerging Infectious Diseases



- After the events of September 11, 2001 and the subsequent anthrax attacks, NIAID and other US Govt agencies concluded new facilities were needed to study dangerous pathogens
- Biodefense budget passed in 2003
 - Bioterrorism
 - Emerging infectious diseases
- NIAID funded intramural and extramural facilities
- NBBTP Safety Training Program



Bldg 33 BSL-3 Facility Bethesda Campus

C.W. Bill Young Center for
Biodefense and Emerging
Infectious Diseases

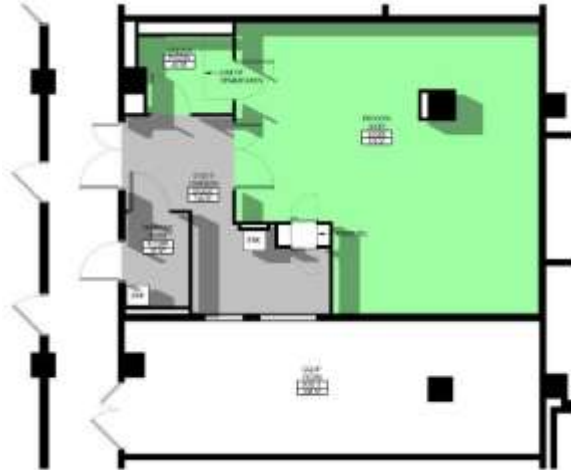
- Dedicated: May 2, 2006
- CDC Select Agent Certification: January 4, 2008
- BSL-2, BSL-3, vivarium (incl. ABSL-3)
- Microscopy, core facilities, admin support
- ~84,000 NASF



Bldg 29B – cGMP Bioproduction Suite, Bethesda Campus



- Production of recombinant malaria protein vaccine candidates i.e., fermentation, purification, and conjugation for phase 1 and 2 trials
- Facility renovation on lower level
- ~1,200 NASF



Bldg 10 E-wing Renovation, Bethesda Campus



General Inspector's Report for Month Ending 4/30/2023

LEVEL 11



SOUTH CORRIDOR VIEW OF OPENLAB
11S207



SOUTH CORRIDOR VIEW OF SOUTHWEST OPENLAB
11S223



- Clinical Center labs
- Top to bottom renovation of 17 levels plus mech penthouse
- ~250,000 GSF overall
- ~11,000 NASF for NIAID
- Occupancy this Fall



VIEW FROM SOUTH CORRIDOR
AND EMPLOYEE LOCKER



VIEW LOOKING AT CENTER OPEN LAB
11S216



Bethesda, MD



Hamilton, MT



Rocky Mountain Laboratories, Campus Growth



4/29/2022 | NIH Rocky Mountain Laboratories Site Plan



Bldg 34 – Multi-species Vivarium (CARES Act), RML Campus



Northeast



Southeast



Northwest

Southwest



Building J – Microscopy Center, RML Campus



- Microscopy, bioinformatics, NIAID management support, and NIH Police
- Lower level for cryoEM Krios microscopy pipeline
- ~49,000 NASF
- Funding recently secured

